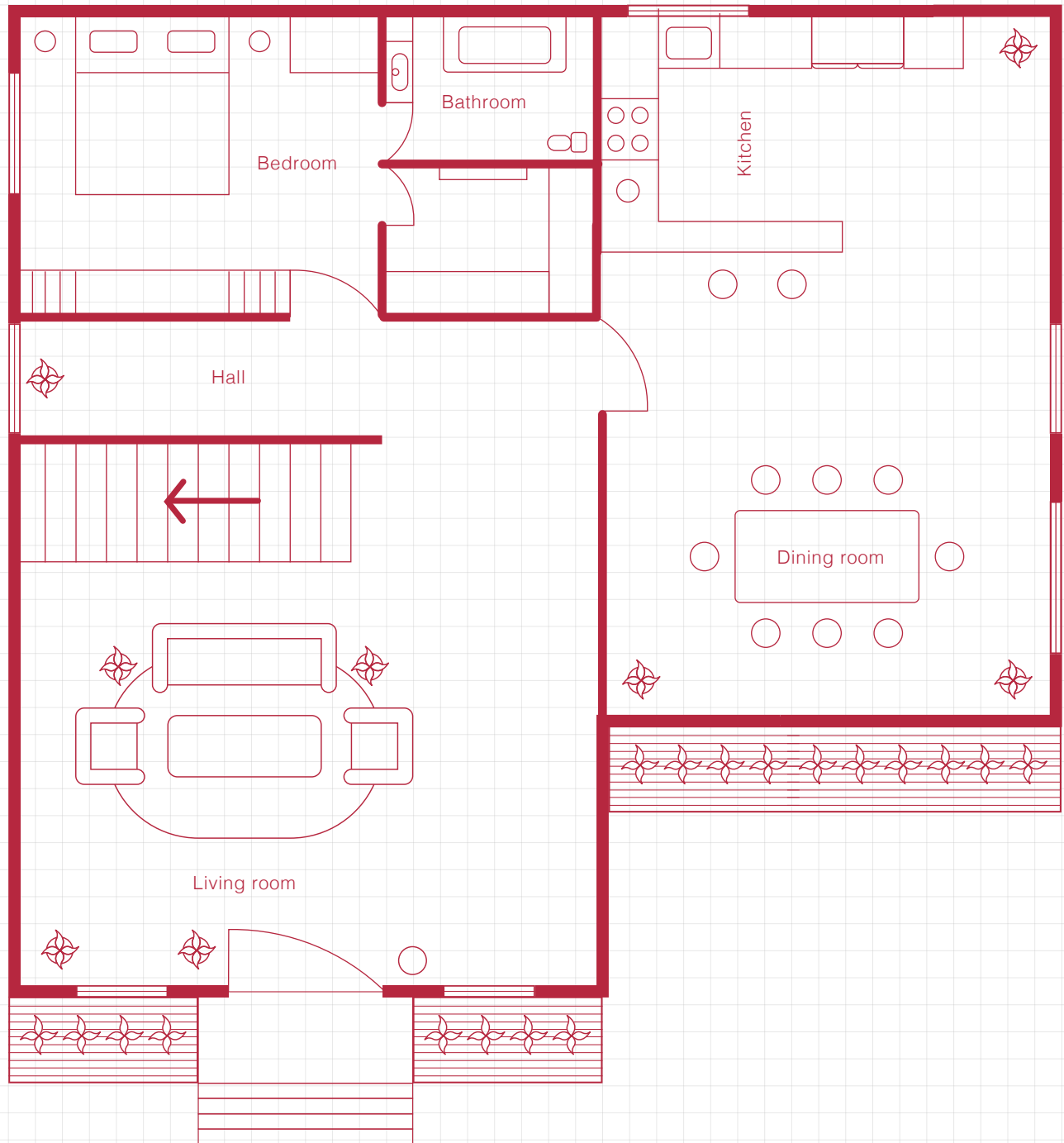


PDGM OASIS Functional Assessment Tool

ROOM-BY-ROOM ASSESSMENT OF FUNCTIONAL OASIS ITEMS



During the OASIS assessment, it is important to ask the patient to perform several activities of daily living in order to assess functional abilities. This room-by-room assessment tool provides a guide for each functional OASIS item that must be assessed with prompts to assist the process.

• **BEDROOM**

M1850-Transferring

- “Show me how you get on/off bed.”
- “Show me how you get from your bed to the nearest chair.”
- “Show me how you get up/down from a chair.”
- Note use of unsafe techniques or “plopping” when sitting.
- Are verbal cues needed for safety?

M1810-Upper Body Dressing

- “Show me how you get a shirt out of the closet.”
- Note use of dressing aids and balance.

M1820-Lower Body Dressing

- “Show me how you get pants out of your dresser.”
- “Show me how you take off your shoes and socks. I need to check your feet.”
- Note use of dressing aids and balance.

• **BATHROOM**

M1840-Toilet Transferring

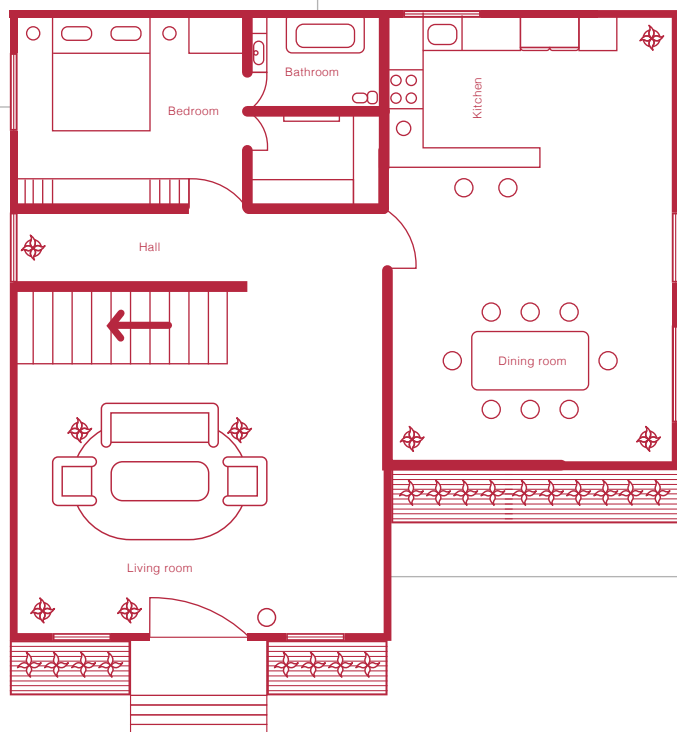
- “Show me how you get to the bathroom from other rooms.”
- “Show me how you get on/off the toilet.”
- Note presence of raised commode seat, toilet frame, and/or grab bars.
- Observe unsafe use of toilet roll holder, towel rack or sink countertops.

M1830-Bathing

- “Show me how you get into your tub/shower.”
- Note presence of grab bars, hand-held shower head and shower seat.
- Observe incorrect use of fixtures, towel rack, shower door/frame, or curtain rod.

M1800-Grooming

- “Where do you keep your grooming supplies?”
- “Can you get them out for me?”
- Observe items located out of safe reach.



• **LIVING ROOM**

M1033- Risk for Hospitalization

- Ask yourself, “Would I be surprised if I learned the patient was hospitalized?”
- It is important to make certain to mark all items that apply.

M1860-Ambulation/Locomotion

- “Show me how you get around your house, and up and down stairs”
- Note whether patient is safe with current ambulation/locomotion.
- Are verbal cues needed for safety?